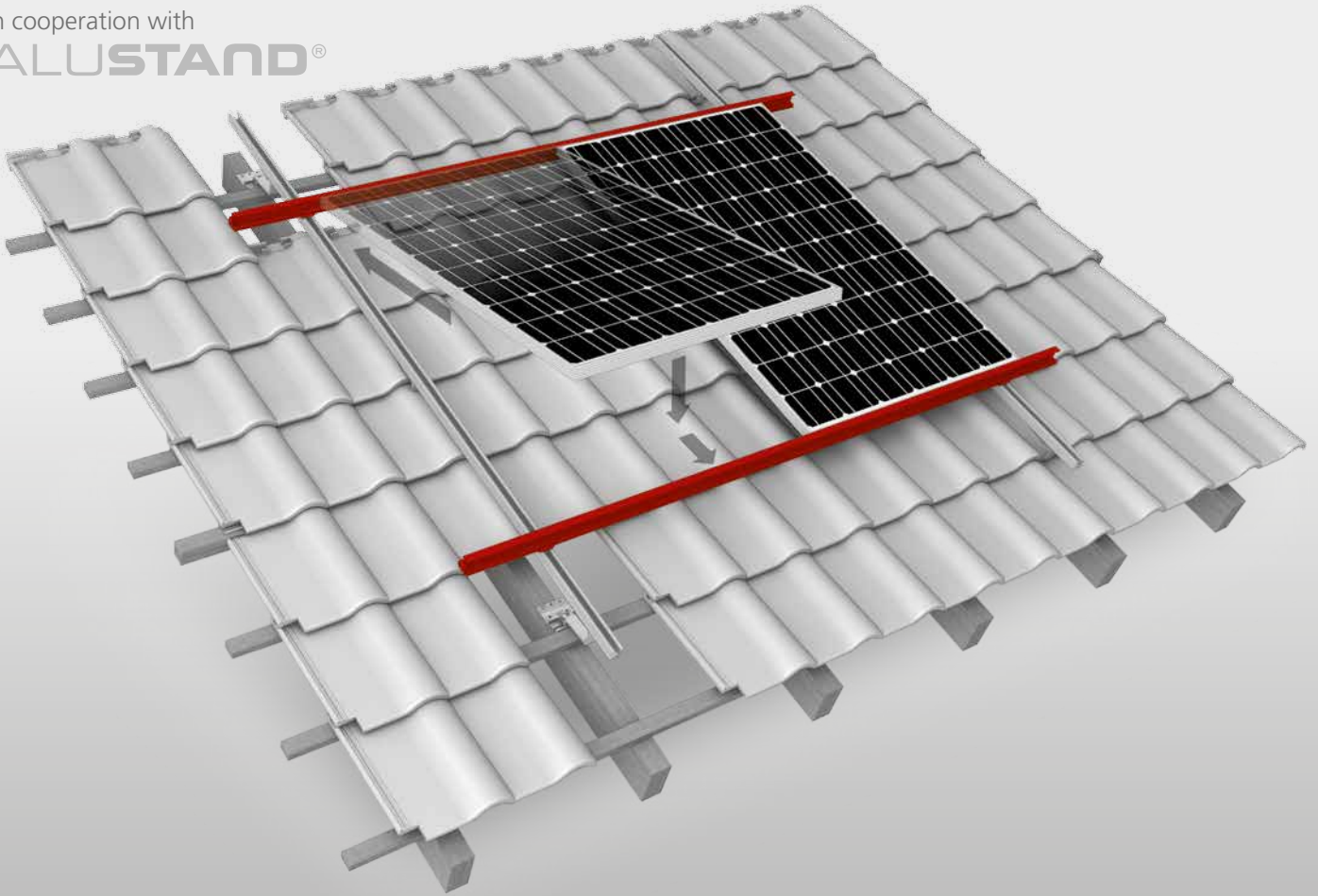




# AluStand Insertion System

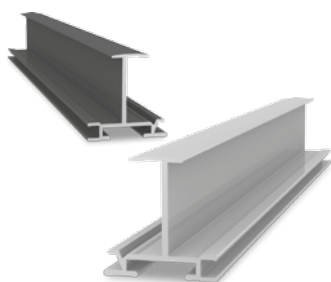
In cooperation with  
**ALUSTAND®**



- ▶ The first insertion system from the Swiss pioneer AluStand
- ▶ Without having to apply clamps eliminates the need for assistance ensuring lightning-fast installation
- ▶ Suitable for most module heights
- ▶ Sleek design with continuous closed surface
- ▶ Insertion profile provides additional frame reinforcement to prevent sliding snow loads.



# ALUSTAND INSERTION SYSTEM COMPONENTS



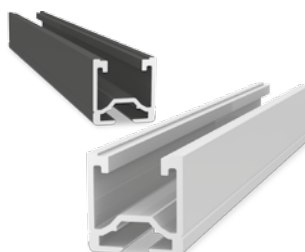
## AluTec insertion rails

- ▶ Intelligent solution for efficient module installation
- ▶ Seals surface
- ▶ Available in black



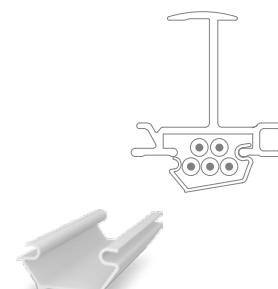
## Clickfix Adapter

- ▶ Fixation for AluTec insertion rail on AluVer mounting rail
- ▶ Simple mounting



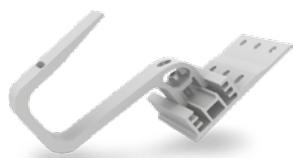
## AluVer

- ▶ Robust mounting rail
- ▶ Different load conditions
- ▶ For large spans
- ▶ Available in black



## Cable management

- ▶ Quick cable connection beneath the insertion rail
- ▶ Up to 5 cables



## CrossHook 3S+

- ▶ 3 height adjustments in the base plate
- ▶ Also suitable for narrow rafters



## CrossHook 4S+

- ▶ 3 height adjustments in the base plate
- ▶ Further height adjustment at the bracket itself
- ▶ Also suitable for narrow rafters



## Hanger bolt with Z adapter

- ▶ For corrugated fibre cement roofing with wooden substructures
- ▶ With building approval

## TECHNICAL DATA

AluStand insertion system	
Scope of application	Pitched roofs with pan tiles or corrugated fibre cement
Fastening type / roof connection	Roof hooks or hanger bolts
Module frame heights (H)	<ul style="list-style-type: none"> <li>▶ 35 mm</li> <li>▶ 40 mm</li> <li>▶ 46 mm</li> </ul>
Requirements	<ul style="list-style-type: none"> <li>▶ 10 mm spacing between AluTec insertion rails</li> <li>▶ Insertion rail width max. 7 m</li> </ul>
Module orientation	Landscape and portrait
Material	<ul style="list-style-type: none"> <li>▶ Mounting rails and Clickfix: Aluminium EN AW-6063 T66</li> <li>▶ Components: stainless steel (1.4301) A2-70</li> </ul>
AluVer rail length [m]	5.0
AluTec rail length [m]	5.0

